

A photograph of a woman with long brown hair, wearing a blue and white patterned top, and a young girl in a tan uniform, both looking down at a large, hollowed-out log in a garden. The ground is covered in brown wood chips, and several small, round wooden stumps are visible in the background. The scene is outdoors, with a wooden fence in the background.

Dr Julian Grenier
Sheringham
Nursery School &
Children's Centre
@juliangrenier

How has COVID-19 impacted on disadvantaged young children and their families in Newham?

Sheringham
Nursery School and
Children's Centre



'Every day I hear about a Covid-19 death': life in the UK's worst-affected area

Coronavirus has hit the London borough of Newham - one of the UK's most deprived areas - harder than anywhere else

- [Coronavirus - latest updates](#)
- [See all our coronavirus coverage](#)



Aamna Mohdin

18:11 Friday, 01 May 2020



Follow Aamna Mohdin

Kamrul Islam doesn't dare visit his local supermarket. Over the last few weeks, he

Newham

- Probably the most diverse area in Europe
- 78% of residents are from ethnic minority communities
- Covid-19: early on, the worst affected area in the UK
- Has more children in temporary accommodation than the whole of the North of England



22%

Percentage of households
experiencing
fuel poverty
(2017) [i](#)



460

Children aged 0-18 in
Out of Work Benefit
Claimant households
(2017) [i](#)



21%

Percentage of children
living in low income
families
(2016) [i](#)

Manor Park in Newham

🔄 You Retweeted



Jason Strelitz
@strelitz_jason

Over 10,000 food and supply parcels and 3,000 prescriptions delivered in 5 weeks to Newham homes that needed support - absolutely amazing effort by 100s of HelpNewham council staff and volunteers [@NewhamLondon](#) - including over 1000 today



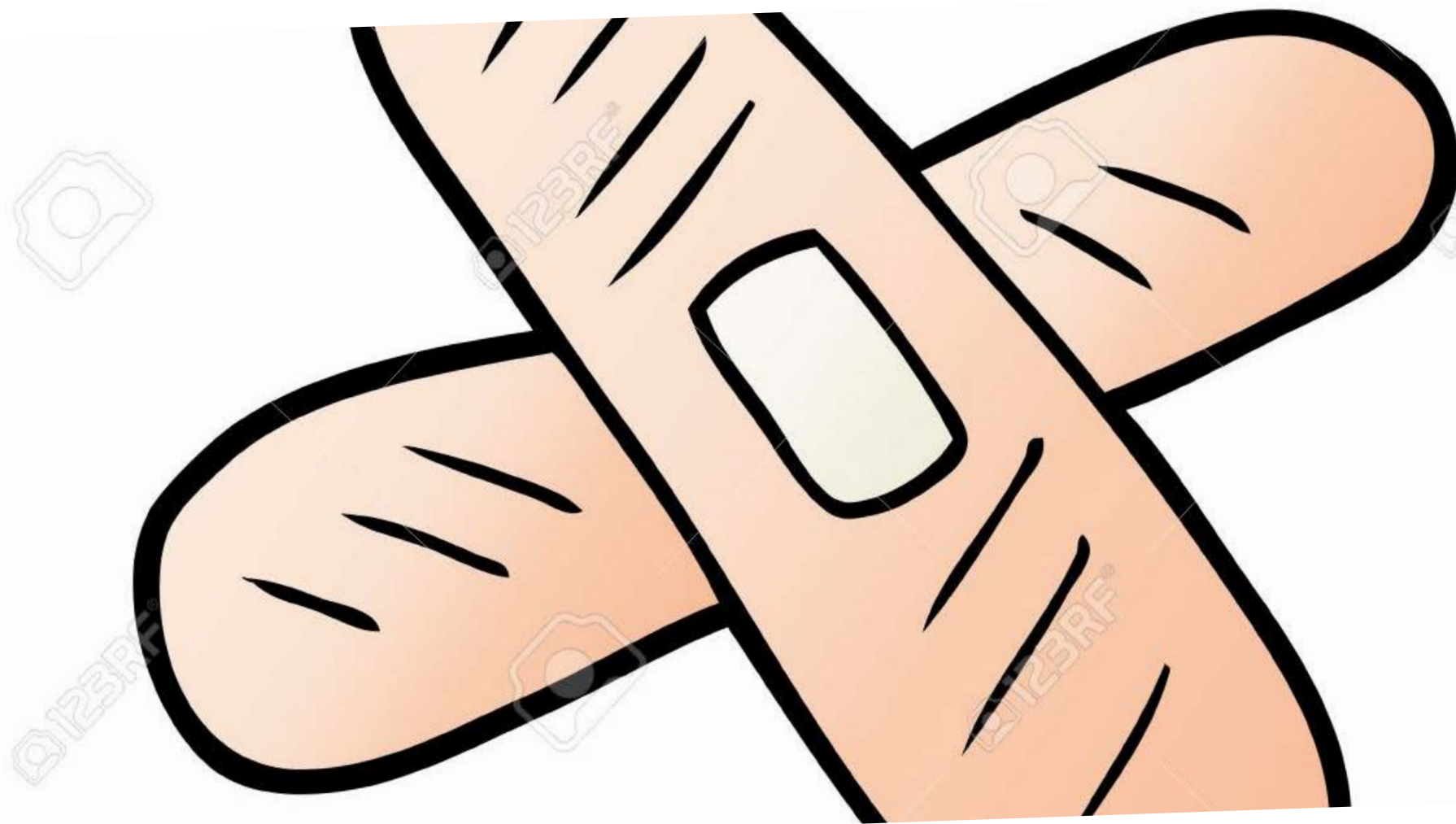
Challenges and learning during Covid-19

- The Children's Centre infrastructure together with other council systems has worked well to respond to urgent need
- As a Children's Centre we are in touch regularly with about 150 'caseload' families
- Many children spent long weeks not going out at all
- Some parents have experienced serious mental health crises e.g. being sectioned
- Many have experienced high levels of anxiety and distress



Unhelpful
ways of
talking about
the early
years







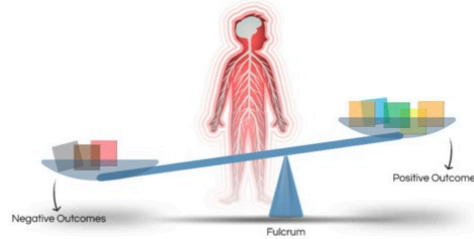
- What lessons have we learnt?
- How can we support disadvantaged young children to make up the lost ground?

Resilience

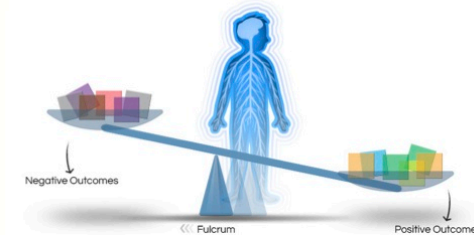
- Relationships
- Systems
- Respectful relationships to support families
- High quality early years education, with a focus on the prime areas



When positive experiences outweigh negative experiences, a child's "scale" tips toward positive outcomes.



The initial placement of the fulcrum affects how easily the scale tips toward positive or negative outcomes.



Over time, the cumulative impact of positive life experiences and coping skills can shift the fulcrum's position, making it easier to achieve positive outcomes.

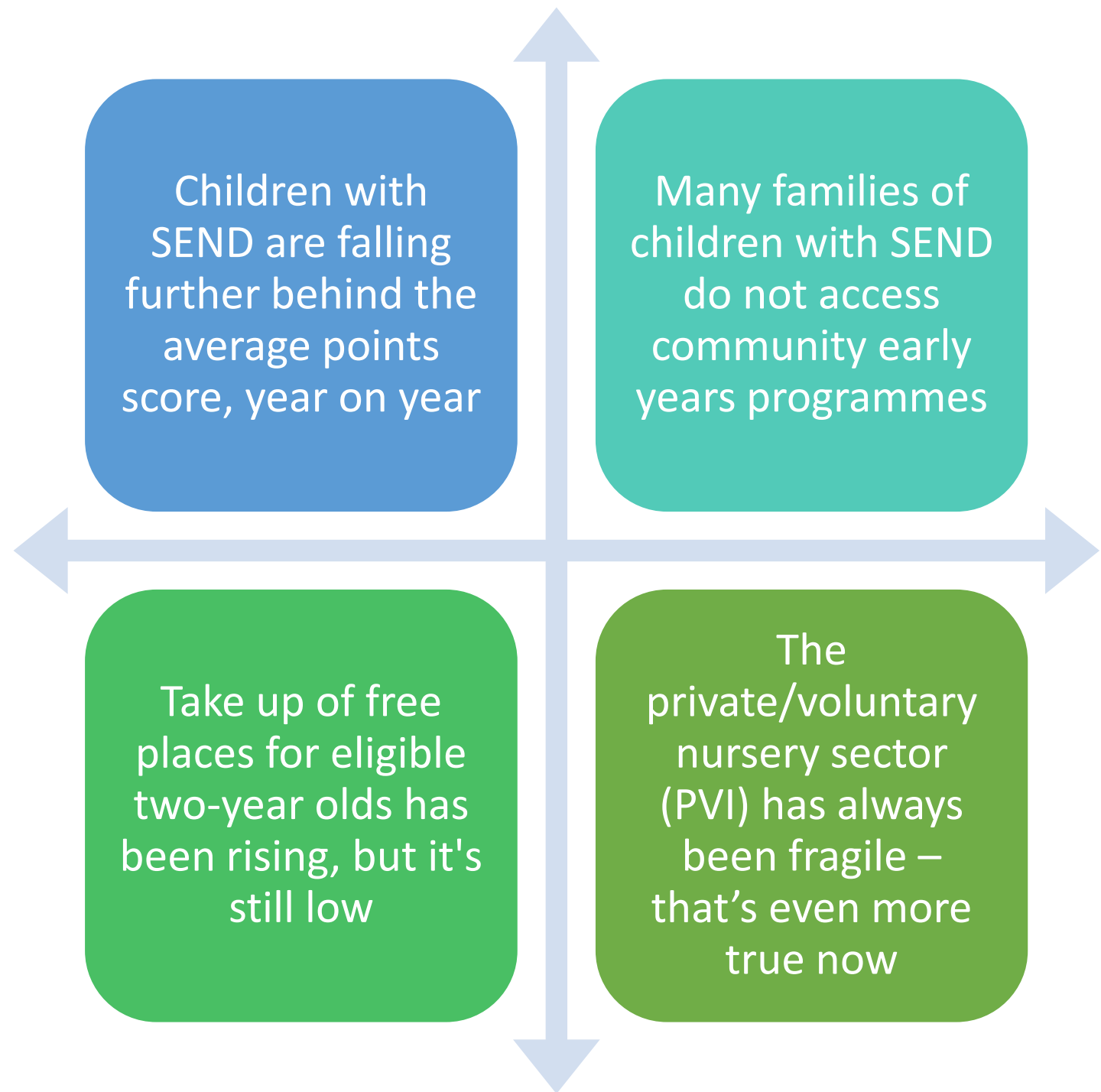
Some of the features of early years in Newham

Best Start in Life Programme: 8 Children's Centre (2 per quadrant) which still offer a range of universal and targeted services.

All the Children's Centres are based in schools and therefore have teacher-led Early Years Education and Childcare on-site

Nearly all Newham's three and four-year olds are in teacher-led nursery classes or maintained nursery schools

Some of the challenges faced in Newham





Looking ahead – early years

- We're learning a lot about using ICT to connect with families
- We can see how blending this with traditional approaches support our work in the future
- We have quite a lot of data about engagement levels but little yet about impact