

This graph shows the relationship between kilometres and miles.

8 kilometres = 5 miles

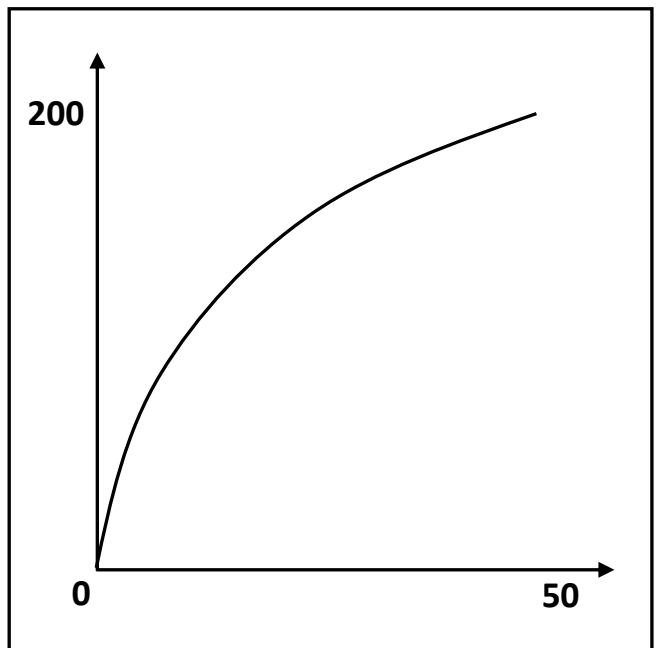
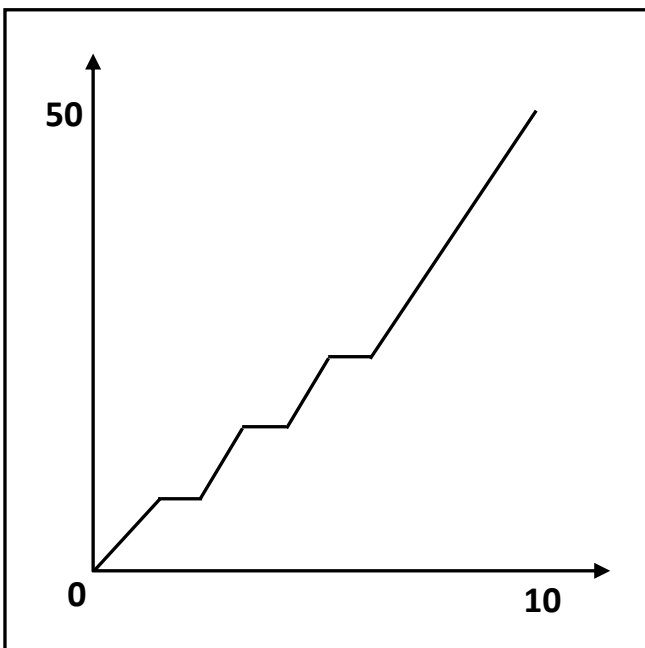
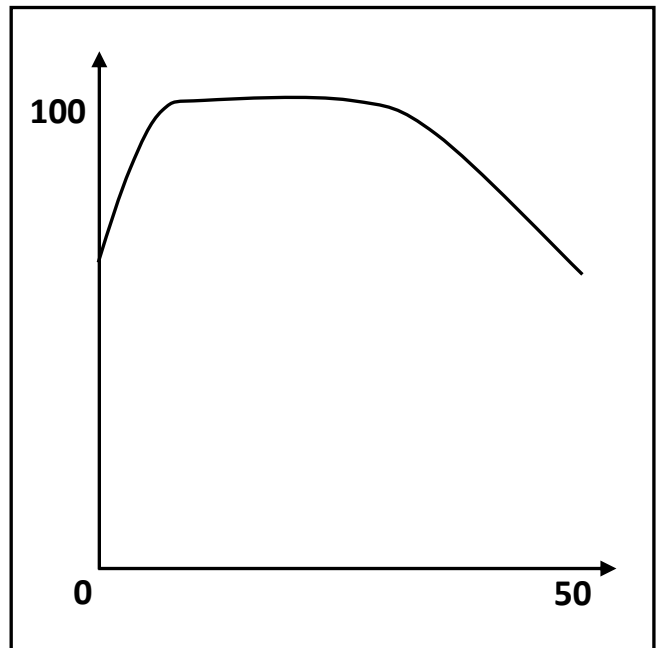
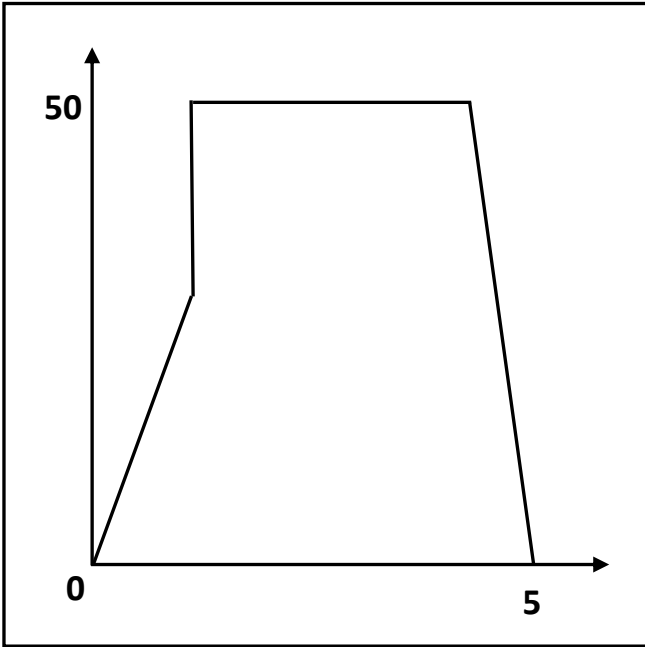
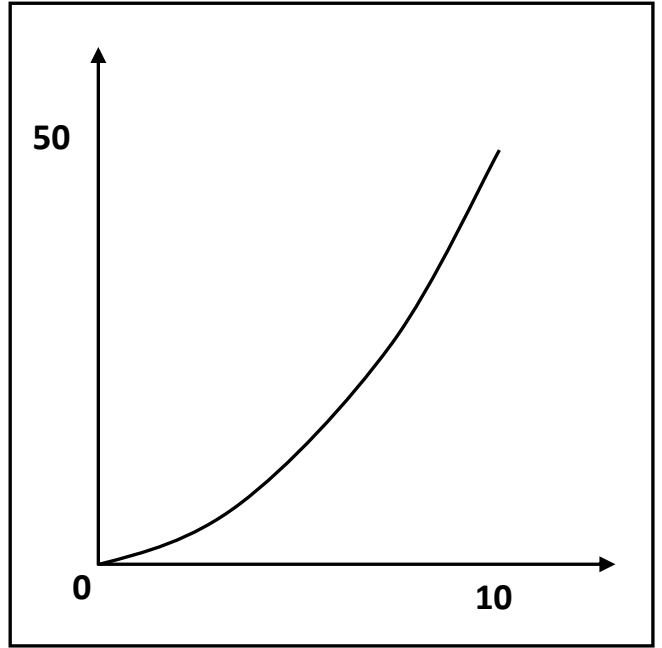
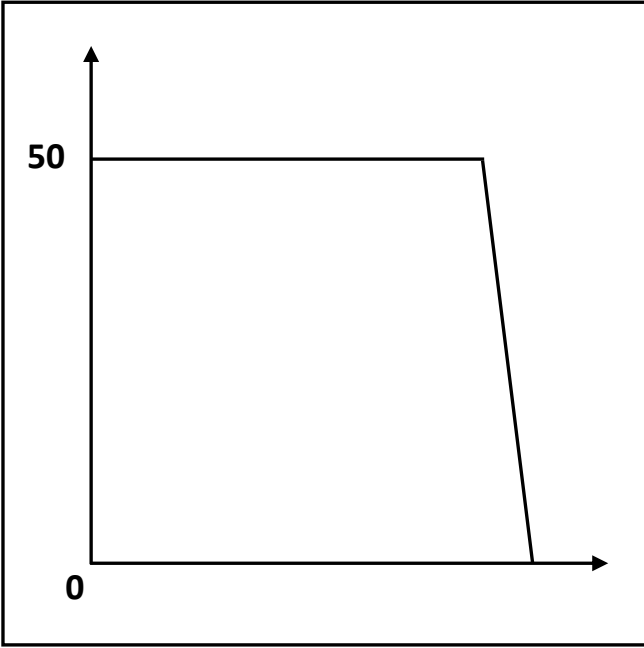
The water boiled at 100°C then cooled to the room temperature of 20°C after 1 hour.

The journey was 100 miles long. We travelled at a steady 50 mph and arrived after 2 hours.

When we took the bread from the freezer, its temperature was -20°C . It took about 30 minutes to thaw.

When full, the tank held 100 litres of oil. We used 20 litres every day. After 5 days it was all gone.

This graph shows the relationship between Fahrenheit and Celsius. For water, freezing point is 0°C or 32°F boiling point is 100°C or 212°F



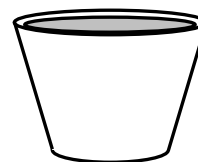
I was driving at a steady 50 mph when I had to do an emergency stop.

The plant grew slowly at first, then more quickly. It reached a height of 50 cm after 10 weeks.

My bath took 5 minutes including the time taken to fill it and let out the water. The depth of the water rose to 50 cm when I got in.

My heart rate rose quickly to 100 beats per minute during exercise. It took longer to fall when I stopped. My heart rate was back to normal 50 minutes after I started exercising.

After setting off from the junction I speeded up to 50 mph in 10 seconds.



This container holds 200 ml of water. The water was poured in steadily until it was full after 50 seconds.